

THERE'S DRAMA IN NATURE

William Shakespeare's

A Midsummer Night's Dream

Directed by
Danielle Irvine



MESSAGE FROM THE PREMIER



MESSAGE FROM THE PREMIER

It is my pleasure to welcome everyone to Perchance Theatre's 2024 season.

Perchance Theatre is a wonderfully unique theatre company, with a focus on bringing Shakespearean pieces to its audiences in open air theatre environments.

It is a special year in Newfoundland and Labrador as we celebrate the Year of the Arts. With some of our province's most esteemed artists both on stage and behind the scenes, the opportunity to take in a Perchance performance is one that you should most definitely seize.

Our Government is proud to support Perchance Theatre again this year. We remain committed to the cultural sector and the talented professionals who create, produce and showcase the incredible artistic offerings here in our province.

Congratulations to Perchance Theatre's Artistic Director, Danielle Irvine, and the entire team. I wish you all a successful season.

A handwritten signature in black ink, appearing to read "Andrew Furey".

Honourable Dr. Andrew Furey
Premier

gov.nl.ca

The official logo of Newfoundland and Labrador, featuring a stylized red and orange flower above the text "Newfoundland & Labrador" in a serif font.

MESSAGE FROM THE MEMBER OF PARLIAMENT



Welcome to the beautiful community of Conception Harbour!

As a longtime supporter of Perchance Theatre, and as your Member of Parliament for Avalon, I am so excited to see what Executive Director Danielle Irvine, cast, and crew have in store for us this summer!

Each year, this team of extraordinarily talented artists put off one show after another in a unique open-air setting which gives you, the audience, a “special VIP guest” feeling. No matter where you sit, you'll get an opportunity to experience theatre without the glare of footlights and echoes, and as a bonus, because you're so close to all the action, you'll be able to easily see all the actors' facial expressions, and really feel their energy in a way that no traditional box office theatre can ever offer!

Perchance Theatre truly is a jewel in the tourism crown for Newfoundland and Labrador and on behalf of the Government of Canada I wish everyone involved a successful, and memorable season.

Enjoy the show!

Sincerely,

A handwritten signature in cursive script that reads "Ken McDonald".

Ken McDonald
Member of Parliament
Avalon

MESSAGE FROM THE MHA



HELEN CONWAY OTTENHEIMER YOUR MHA FOR HARBOUR MAIN

402 Conception Bay Highway | Holyrood, NL A0A 2R0



(709) 229-0160



helenconwayottenheimer@gov.nl.ca



(709) 229-1969

It is my pleasure to welcome everyone to this fabulous theatre production today and the opening of another exciting summer at Perchance Theatre in beautiful Conception Harbour in the district of Harbour Main.

My sincere congratulations to Perchance Theatre, the directors, artists, stage crew and everyone who was involved in making today's production a reality. You are known for delivering an amazing show and I know today will be no different.

Thank you,



Cupids Legacy Centre

**CUPIDS. ATTRACTING
EXPLORERS SINCE 1610.**

explorecupids.ca

MESSAGE FROM THE TOWN OF CONCEPTION HARBOUR



Our council team together with our community extend our warmest wishes to Perchance Theatre on their upcoming season. We wish you all the best with your new season and look forward to all that Perchance Theatre has to offer to our community and to the surrounding areas.

Best wishes and good luck with all that you will bring to our beautiful community for our residents and all other visitors from near and far to enjoy.

Judy Rotchford, Mayor
Town of Conception Harbour

Land Acknowledgement

Perchance Theatre respectfully acknowledges that our theatre resides on the ancestral homelands of the Beothuk, and that the island of Newfoundland is the ancestral homelands of the Mi'kmaq and Beothuk. Perchance also recognizes the Inuit of Nunatsiavut and NunatuKavut and the Innu of Nitassinan, and their ancestors, as the original peoples of Labrador. Perchance strives for respectful relationships with all the peoples of this province as we search for collective healing and true reconciliation and honour this beautiful land together.

MESSAGE FROM THE BOARD OF DIRECTORS

Chair of the Board of Directors, Perchance Theatre

The Perchance Theatre Festival is open! Hold onto your seats, it's going to be a fantastic, immersive experience.

Artistic Director Danielle Irvine, and the Perchance Theatre team with their reputation for high-caliber performances, beautiful set and costume designs, and talented actors galore, are back for another year. Nestled in beautiful Conception Harbour, we are happy to call this new space home. We thank the citizens of Conception Harbour for their warm welcome, dedicated volunteer spirit and their support of the power of theatre to bring us together from small communities which pepper our shores, to the world beyond.

Thank you to The Sisters of Mercy in particular for their continued support and their belief in what the future will bring for Perchance Theatre. We are grateful that they have trusted us with their convent as we turn it into our new home. We will respect the integrity and history of the building.

This season we have three offerings. Each play brings with it an energy and feeling unlike the other. *A Midsummer Night's Dream* will transport you to a mystical forest in Newfoundland, where the whimsical antics of mischievous fairies ensue a merry chase among infatuated townies. Directed by Danielle Irvine, this is timeless. Shakespearean classic promises to enchant and delight.

High Steel follows three generations of the Costello family from Conception Harbour, NL, showcasing their remarkable journey building skyscrapers and bridges across North America. Directed by Mary Walsh, this heartwarming musical celebrates the resilience of Newfoundlanders who ventured to distant lands, all while cherishing their roots and family ties.

In the co-production with Artistic Fraud of *Tempting Providence*, witness the remarkable true story of Nurse Myra Bennett, who left her home in England to serve as the sole healthcare provider for Newfoundland's Great Northern Peninsula. Directed by Jillian Keiley (artistic director of the National Arts Centre, and Artistic Fraud), this compelling drama celebrates the resilience of the human spirit and the power of compassion in the face of adversity.

Complete Works of William Shakespeare (Abridged) [Revised] [Again]

A high-energy romp by Adam Long, Daniel Singer, and Jess Winfield. Under the direction of internationally renowned director Richard Rose, this show blends classical work with clownish antics, catering to both lovers and haters of Shakespeare alike. Enjoy this performance brought to you by "The Come - By - Perchance Players".

We would also like to thank our donors, corporate sponsors, and especially our volunteers for all of your support. We gratefully acknowledge the provincial support of ArtsNL; the Department of Tourism, Culture, Arts and Recreation; the Cultural Economic Development Program; the Department of Industry, Energy and Technology; and the Business Development Support Program.

We wish to also acknowledge federal support from the Atlantic Canada Opportunities Agency, Canada Council for the Arts, and The Government of Canada.

Thank you for coming. Enjoy the show!

Natasha Hart
Chair of the Board of Directors
Perchance Theatre

MESSAGE FROM THE ARTISTIC DIRECTOR

When *A Midsummer Night's Dream* starts, both human and magical worlds are out of balance and through the course of their adventures, they find humour, humility, and love.

The reality we have been living in over the past few years has been reeling from disease to wars to societal upheavals. In the middle of such strife, it is important for us to take moments to reconnect. To find our balance. To remember that love and joy can come in the most unlikely and humble of places. It is in those precious moments, when we feel true joy, that we get grounded once again. Things become possible. Our edges get softer, and the distances between us gets smaller.

The shows we bring you this year offer a range of experiences. We are honoured to welcome *High Steel* back to the stage with its evocative and complex story of generations of Newfoundlanders and the mark they made building cities far away, as well as the toll it took on them and their families.

Leaving the city behind, you can follow our lovers and mechanicals into the woods for an otherworldly romp with the timeless classic, *A Midsummer Night's Dream*. This cast, whose youngest member is 8 years old, has in it three generations of a family, for an extra special dose of magic.

Bursting off the stage next will be the *Complete Works of William Shakespeare (Abridged) [Revised] [Again]*. Tearing into the text and tearing down any semblance of an ivory tower, this speed train of poetry and foolishness both honours and humbles the Bard. Be warned: this is not your average pie in the face Shakespeare.

Tempting Providence is a dynamic, thrilling story of love and resilience that resonates with many of the themes in this summer season while this co-production with Artistic Fraud beautifully closes the distance between companies across the province. What began over 20 years ago in Cow Head, NL with TNL's Gros Morne Theatre Festival continues to win hearts and minds the world over.

Rounding out our offerings, you can take in music, comedy, puppet shows, and storytelling, all the while quieting your mind in this beautiful spot nestled next to the ocean. Relax on our lawn after the show, watch for whales, and listen to the breeze - enjoy the time away from the every day. Let the magic of the shows and the place bring you peace.

“For never any thing can be amiss, when simpleness and duty tender it.”



Danielle Irvine
Artistic Director
Perchance Theatre

Board of Directors

Chair — Natasha Hart
Vice Chairs — Giles Ayers, Raymond Critch
Treasurer — Ashley Noseworthy
Secretary — Aleksandra Stefanovic-Chafe
Members At Large — Barbara Doran, William Newton, Don Fitzpatrick,
Patrick Mackey, Allison Catmur
Danielle Irvine (Artistic Producer, ex-officio)

Perchance Administration

Artistic Producer, Director, *A Midsummer Night's Dream* — Danielle Irvine
Back Office Administrator — Nicole Hand
Project Manager — Heather Elliott
Business and Development Coordinator — Precious Serapio Dela Cruz
Administrative Assistant — Brittany King

Artistic Fraud

Artistic Director — Robert Chafe
Managing Producer — James Richardson
Marketing & Communications Officer with Artistic Fraud — Emma Cole

Creative & Production

Production Manager/Technical Director — Elisabeth Nyveen
Playwright, Director, *High Steel* — Mary Walsh*
Director, *The Complete Works of William Shakespeare*
(*Abridged*) [*Revised*] [*Again*] — Richard Rose*
Director, *Tempting Providence* — Jillian Keiley*
Assistant Director, *A Midsummer Night's Dream* - Allison Moira Kelly
Set Design, *High Steel* — Aurora Judge
Costume and Set Design, *A Midsummer Night's Dream* — Alison Helmer
Costume Design, *High Steel* — Alison Helmer
Costume and Set Design, *The Complete Works of William Shakespeare*
(*Abridged*) [*Revised*] [*Again*] — Tucker Ellis
Season Sound Design and Composition — Jodee Richardson*
Music Composition and Arrangements — Nicole Hand
Choreographer, *High Steel* — Lynn Panting
Stunt Coordinator, *High Steel* — Glenn Redmond
Fight Director, *A Midsummer Night's Dream* — Anita Nittoly
Dance Captain, *High Steel* — Una Hill-McMullin
Choreographer, *A Midsummer Night's Dream* — Robyn Breen
Stage Manager, *High Steel*, Stage Manager *Tempting Providence* —
Anna Hansen-Robitschek
Stage Manager, *A Midsummer Night's Dream* — Leo Mackey

Stage Manager, *The Complete Works of William Shakespeare (Abridged)*
[Revised] [Again], Stage Manager, Open Sky Series — Sheldon Downey

Assistant Stage Manager — Saskia Shulz-Norvell

Project Manager — Heather Elliott

Business and Development Coordinator — Precious Serapio Dela Cruz

Box Office — Martin Rotchford, Jayne Batstone,
Seamus Kavanagh-Penney, Liam Kavanagh-Penney

Lead Contractor on Site — Woody Meaney

Cast List

Selina Asgar — Titania/Hippolyta, *A Midsummer Night's Dream*; Sampson, Romeo,
Nurse, Soldier, Shrew, Bottom, Witch, Julius Caesar, Conspirator, Richard II,
Announcer, King Lear, Cheerleader, Guard, First Guard, Second Guard, Horatio,
Polonius, Laertes, The Duke, *The Complete Works of William Shakespeare*
(Abridged) [Revised] [Again]

Franny McKeown — Cobweb, *A Midsummer Night's Dream*

Marthe Bernard* — Hermia, *A Midsummer Night's Dream*

Christa Borden — Mary Mag/Ella/Mame, *High Steel*; Egeus/Starveling/
Peaseblossom, *A Midsummer Night's Dream*

Colin Furlong — Roly/George/Dr. McPherson, *High Steel* ;
Angus, *Tempting Providence*

Andrew Halliday — Demetrius/Snug the Joiner, *A Midsummer Night's Dream*;
Benvolio, Juliet, Tybalt, Lavinia, Othello, Princess, Macduff, Soothsayer,
Conspirator, Cleopatra, Henry VIII, Cheerleader, Bernardo, Ghost, Ophelia,
Claudius, Gertrude, *The Complete Works of William Shakespeare (Abridged)*
[Revised] [Again]

Tzu-Hao- Hsu — Puck/Attendant, *A Midsummer Night's Dream*

Andy Jones* — Bottom, *A Midsummer Night's Dream*

Olive Jones — Moth, *A Midsummer Night's Dream*

Una Hill-McMullin — Mom Durham/Mama Goddammita/Alice/Dora, *High Steel*;
Myra, *Tempting Providence*

Stephen Oates — Con/Tom/Master Derrick, *High Steel*; Oberon/Theseus,
A Midsummer Night's Dream; Man, *Tempting Providence*

Andrew James O'Brien — Father Corrigan/Red Trahey/Pat/Mike/Jim/Bartender,
High Steel ; Tom Snout, The Tinker/Mustardseed, *A Midsummer Night's Dream*

Blake Pyne* — Lysander/Flute, the bellows mender, *A Midsummer Night's Dream*;
Prince, Friar Laurence, Titus Andronicus, Macbeth, Marc Anthony, King John,
Cheerleader, Hamlet, Player King, Player Queen, *The Complete Works of William*
Shakespeare (Abridged) [Revised] [Again]

Jodee Richardson* — Musician/Ray/Calvin, *High Steel*

Erika Squires — Bridge/Christine/Josephine/Tish, *High Steel*; Helena,
A Midsummer Night's Dream

Marquita Walsh — Petra/Quince/Philostrate/Fairy, *A Midsummer Night's Dream*;
Woman, *Tempting Providence*

*The participation of this Artist is arranged by permission of Canadian Actors' Equity Association under the provisions of the Dance-Opera-Theatre Policy (DOT).

DONORS

We are a non-profit organization. Our existence depends on the support of three revenue streams: public funding, ticket sales, and YOU, our gracious donors. Every donation made to Perchance Theatre goes a long way. Support from our audience, donors, and sponsors helps to ensure that: we can continue to make high-class professional theatre accessible to as many people as possible, we can create jobs for young people in their region, and we can build opportunities for artists to work with high-calibre theatre practitioners from around the world. So thanks, and thanks, and ever thanks to all who have made the Perchance dream a reality. A special thank you goes out to all of those below who donated in memory of Janet Edmonds, Joan L. Gunness, Ross Leslie, and Ian Watson.

Ambassador

Francesca Godwin
Janine Pearson

5000 up to 9999

Christopher & Paula
Collingwood
Peter & Deborah
Collingwood
Barbara Doran
Don Fitzpatrick &
Angela Pickles
Bill & Judy Newton
Dan & Barbara Penney

1000 up to 2499

Giles Ayers
Daniel Boone &
Catherine French*
Sharon K Buehler*
Glenn Deir &
Debbie Youden
Susan & Jim Flynn*
Andrew Grimes
Lois Hoegg
Kent Foran
Denyse Lynde
Peter & Elizabeth Mulley
Margo Connors &
Robert Stack

500 up to 999

ANON
Libby Creelman*
Marget G Davis*
Dianne Gartley
Noreen Golfman*
John O'Dea

Perry Schneiderman
Jamie Skidmore*
Eleanor Swanson
Jill Whitaker*
Meaghan McConnell

250 up to 499

Moyra Buchan*
Anne Campbell*
Raymond Critch
Louise Dawe
Libby and Geoff Duffett*
Barbara Grandy
Kerri Keeping
Lorraine Michael
Heather Myers*
Dr. Bryar Smith PMC
Caroline Nicholson

100 up to 249

James & Susan Adams
ANON
Peter Barnes
Calvin Barrett*
Laura Barron
Rhona Buchan
Robert Chafe*
Mary Chalker
Geraldyn Christmas
Roy and Rosalind Dawe
& Pearl Roberts
J Anthony Dearness
Victoria Dickenson
Viviane Dohle*
Patrick Foran
Jessica Grant*
Virginia Grant

Michelle King
Debbie McGee*
Douglas Meggison*
Linda Mencis
William Newton*
Victoria Northey
Frankie O'Neil
Ingrid Pardoe
Anita & Chris Pike *
Valerie Pike
Susan Quinlan
Deborah Rehner*
Barbara Saipe
Marcia Spence
Aleksandra Stefanovic-
Chafe
Ruth Wakeham

Up to 100

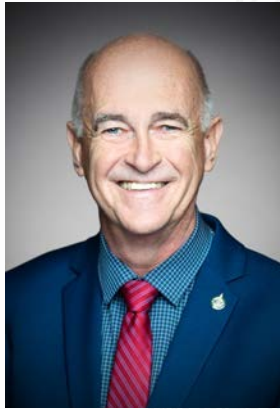
Donna Ball
Ann Connors
Allan Goulding
Sheila Hallett
Robbie Hicks
Sharon Leslie
David Penner
Christopher Pike
Paul Sametz
Glenn Warner
Kate Wilson
Michael O'Keefe
Mike Grant
Christine Care

***Monthly Supporters**

Ken McDonald

Member of Parliament for Avalon

Proud supporter of



120 Conception Bay Highway
Bay Highway, CBS Suite 105
CBS, NL A1W 3A6

or call 709-834-3424

Email:

Ken.mcdonald@parl.gc.ca



[@McDonald4Avalon](#)

PERCHANCE THEATRE

FOUNDATIONS



MERCER-LUNZ
FOUNDATION



Harrison McCain
FOUNDATION



Rotary
St. John's Northwest



FUNDERS



We acknowledge the support of ArtsNL, which last year invested \$3.2 million to foster and promote the creation and enjoyment of the arts for the benefit of all Newfoundlanders and Labradorians.

SPONSORS



Where the Music Begins

SALES · RENTALS · REPAIRS · FINANCING
MUSIC LESSONS FOR ALL AGES, LEVELS & STYLES
ONLINE SHOPPING @ LONG-MCQUADE.COM



Long & McQuade

MUSICAL INSTRUMENTS 

l o n g - m c q u a d e . c o m

Serving Canada since 1956 with over 100 locations including
447 Kenmount Road · (709) 753-1885 · stjohns@long-mcquade.com

High Steel

June 29 - August 23

Written by Mary Walsh* and Rick Boland

Music by Ron Hynes

Directed by Mary Walsh*

High Steel follows three generations of the Costello family from Conception Harbour and their contribution to the construction of skyscrapers and bridges throughout North America. Beyond the Costellos, High Steel is also the story of all the Newfoundlanders who, because of the collapse of the fishery in 1897, began an outmigration to New York, Philadelphia and the world.

Please Note that this show contains strong language that may not be suitable to all viewers.

Cast List (In Alphabetical Order)

Christa Borden – Mary Mag/Ella/Mame

Colin Furlong – Roly/George/Dr. McPherson

Una Hill-McMullin – Mom Durham/Mama Goddammita/Alice/Dora

Stephen Oates – Con/Tom/Master Derrick

Andrew James O'Brien – Father Corrigan/Red Trahey/Pat/Mike/
Jim/Bartender

Jodee Richardson* – Musician/Ray/Calvin

Erika Squires – Bridge/Christine/Josephine/Tish

Creative & Production List

Stage Management – Anna Hansen-Robitschek

Costume Design – Alison Helmer

Set Design – Aurora Judge

Choreography – Lynn Panting

Dance Captain – Una Hill-McMullin

Stunt Coordination – Glenn Redmond

High Steel worker belts generously provided by Greg Walsh and Cathy Walsh.

Directors Notes

“With the twentieth century still in bloom,
In fair Conception Bay
The world turned round
And men were bound
All for the USA
Onto the streets of New York town
They poured like morning tide
to build the concrete and the steel
Up to the New York sky.”

—Ron Hynes, *High Steel*

What better way to open up Perchance’s new season in Conception Harbour than with a musical set in Conception Harbour and New York.

High Steel The Musical follows three generations of the hard working, hard drinking, sharp-tongued Costello Family. After the failure of the Labrador fishery, the Costello’s, as well as many people from the Harbour Main district, were forced to leave their homes and make their way down to the burgeoning cities of the eastern United States. Cities that were full of opportunities and promise. The women often going into service as maids, or “biddies”, and the men going to work in the brutal and dangerous trade of ironworking. With courage, daring, determination and endurance, these men found themselves in New York, striding across thin ribbons of steel, building the skyscrapers that mark the New York skyline to this day.

In 1984, Ron Hynes, Rick Boland and myself travelled around the Harbour Main district gathering incredible stories from people who’s grandfather’s had built the Empire State building and who themselves, or their brothers or their uncles had worked on the World Trade Centre. Ron wrote the songs and Rick and I wrote the stories.

High Steel is an Inspiring, funny, rambunctious exploration of hard work, outmigration and the deep and profound importance of home and family.

RON HYNES – Music for *High Steel*



Ask any Newfoundland songwriter who his or her role model is, and the answer comes without hesitation: Ron Hynes. Revered throughout his home province and across Canada, the prolific Hynes became known as the godfather of Newfoundland culture.

“The man of a thousand songs” was born Ronald Joseph Robert Hynes in 1950. As a child in the Newfoundland fishing town of Ferryland, he was steeped in the region’s Irish music-making and story-telling traditions as well as the country songs of Hank Williams and Johnny Cash.

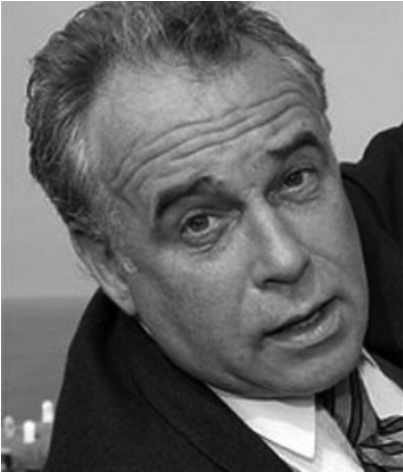
Hynes recorded his trail-blazing debut album “Discovery” in Halifax in 1972 — the first time a Newfoundlander made a recording entirely of his own original songs — bringing his roots-country music to audiences in the Atlantic region, Ontario and elsewhere. He also wrote music for The Mummer’s Troupe, toured with the folk-comedy outfit The Wonderful Grand Band from 1978 to 1983, made film and television appearances, and starred in the stage show “Hank Williams: The Show He Never Gave.”

He became a larger-than-life figure on the East Coast circuit in his trademark broad-brimmed hat, singing stories rooted in Newfoundland life.

Listeners in the Atlantic provinces and beyond identified with powerful Hynes compositions such as Back Home on the Island, St. John’s Waltz, and the sorrowful Atlantic Blue honouring the Ocean Ranger disaster. Prince Edward Island songwriter Lennie Gallant explained Hynes’s impact to FYI Music News: “It may have been the first time I ever really heard someone sing about an East Coast fishing town in a totally original way, and that, in a three and a half minute song, managed to include anger, sadness, humour, passion, poetry and a great deal of Island pride.”

(Bio from Canadian Songwriters Hall of Fame, for full bio visit <https://www.cshf.ca/songwriter/ron-hynes/>)

RICK BOLAND – Co-writer *High Steel*



Rick Boland was an actor, writer, director and comedian. Boland was a staple in Newfoundland and Labrador's theatre community, having spent time with the Newfoundland Travelling Theatre Company and the Mummers Troupe collective. He co-founded Rising Tide Theatre, the festival in Trinity. He was featured in countless on-screen roles and was an all-time audience favourite. We lost Rick this year, and we and the theatre community miss him dreadfully.

Glossary

Columns: Vertical steel

Beams: Horizontal steel

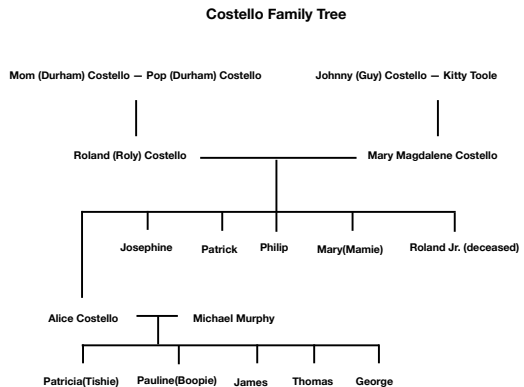
Pusher: The foreman on an ironworkers jobsite.

Biddy: Young Newfoundland women working in service in New York at the turn of the century. Traditionally their day off is Thursday.

Connector: The ironworker who connects the beam to the column. There are two connectors, one on each end of the beam.

BA: Union Business Agent

Permit Men: Not a full union member, just a worker who received a permit to work on a union job.



A MIDSUMMER NIGHT'S DREAM

A Midsummer Night's Dream

July 6 - August 25

Written by William Shakespeare

Directed by Danielle Irvine

"A Midsummer Night's Dream" by William Shakespeare is a story that explores love, friendship, and the power of imagination. Young lovers on the run and actors rehearsing a play all take refuge in the forest where magical creatures abound. Mistaken identity, chase scenes, and a bit with a donkey - this joyful show celebrates the magic in us all.

Cast List (In Alphabetical Order)

Selina Asgar – Titania/Hippolyta

Marthe Bernard* – Hermia

Christa Borden – Egeus/Starveling/Peaseblossom

Andrew Halliday – Demetrius/Snug/the Joiner/Lion

Tzu-Hao Hsu – Puck

Andy Jones* – Bottom

Olive Jones – Moth

Franny McKeown – Cobweb

Stephen Oates – Oberon/Theseus

Andrew James O'Brien – Tom Snout/The Tinker/Mustardseed

Blake Pyne* – Lysander/Flute/Thisbe

Erika Squires – Helena/Fairy/Titania

Marquita Walsh – Petra Quince/Philostrate

Creative & Production List:

Assistant Direction – Allison Moira Kelly

Stage Management – Leo Mackey

Set and Costume Design – Allison Helmer

Sound Design – Jodee Richardson*

Choreography – Robyn Breen

Fight Coordination – Anita Nittoly

*The participation of these Artists is arranged by permission of Canadian Actor's Equity Association under the provisions of the Dance-Opera-Theatre Policy (DOT)

A MIDSUMMER NIGHT'S DREAM

“We are their parents and original.“

When *A Midsummer Night's Dream* starts, the world is out of balance. Characters have become so fixated on getting what they want that they care not what it costs; self-respect, honour, life, Nature itself.

It takes some shaking up for them to be able to see clearly the cost of their actions, for their ego and pride to rebalance and to understand and accept “mine own and not mine own”.

The idea of magic seems far fetched until we examine ourselves and see just how driven we can be by the invisible force of our emotions and our imagination. How they inform how we see everything around us.

To build the world of this summer's production Alison Helmer, our designer, delved into how bee's see the world, which is driven by their search for pollen. Flowers' inside and outside appear differently as, clearly, beauty is in the eye of the beholder.

We set our humans in the 1970s during which there was a renaissance resurgence as they played with time and place in popular culture.

The magical world has beings that have existed for millennia and can “put a girdle around about the earth in forty minutes” “drawing individual inspiration and connection more broadly from time and place.

We are all, ultimately, interconnected. Accepting that fact can allow a few imaginary boundaries to drop and a bit of magic to come in.



SHAKESPEARE IN THE GARDEN

Join us on August 6th as Perchance Theatre returns for our signature event in the garden!



Tickets available at MUN Botanical Garden 709-864-8590.

The Complete Works of William Shakespeare (Abridged) [Revised] [Again]

July 13 - August 24

Written by Adam Long, Daniel Singer & Jess Winfield

Directed by Richard Rose*

A high-energy romp by Adam Long, Daniel Singer, and Jess Winfield. Under the direction of internationally renowned director Richard Rose, this show blends classical work with clownish antics, catering to both lovers and haters of Shakespeare alike. Enjoy this performance brought to you by "The Come - By - Perchance Players".

Please note that this show contains some PG-13 language, but just keep laughing!

Cast List (In Alphabetical Order)

Selina Asgar as Selina Asgar playing:

Sampson, Romeo, Nurse, Soldier, Shrew, Bottom, Witch, Julius Caesar, Conspirator, Richard II, Announcer, King Lear, Cheerleader, Guard, First Guard, Second Guard, Horatio, Polonius, Laertes, The Duke

Andrew Halliday as Andrew Halliday playing:

Benvolio, Juliet, Tybalt, Lavinia, Othello, Princess, Shylock, Macduff, Soothsayer, Conspirator, Cleopatra, Henry VIII, Cheerleader, Bernardo, Ghost, Ophelia, Claudius, Gertrude

Blake Pyne* as Blake Pyne playing:

Prince, Friar Laurence, Titus Andronicus, Macbeth, Marc Anthony, King John, Cheerleader, Hamlet, Player King, Player Queen

Creative & Production List

Stage Management – Sheldon Downey

Costume and Set Design – Tucker Ellis

Sound Design – Jodee Richardson*

Special thanks to: William Shakespeare, Anne Hatheway (his wife), John Shakespeare (his father), Mary Arden (his mother), Hamnet Shakespeare (his son). Susanna Hall née Shakespeare (his daughter), Judith Quiney née Shakespeare (his daughter).

THE COMPLETE WORKS OF WILLIAM SHAKESPEARE

Directors Notes

Shakespeare, Shakespeare, Shakespeare, Shakespeare, Shakespeare

Da Dum Da Dum Da Dum Da Dum Da Dum

Three of Newfoundland's most preeminent Shakespearean scholars present a Feast of Iambic Pentameter - 38 ecstatic plays by the Great God Shakespeare all to be performed in two hours.

YES, this show is a miracle waiting to happen!

It is a joy to have worked in a theatre that is very much not perchance. And filled with artists trumpeting the classics for everyone.

Thank you for joining this most grave and ridiculous, most brave and idiotic, most heartening and disheartening Shakespeare like you have never seen (and hopefully never will)!

It has been a pleasure and a headache.

Richard

THE WINTER'S TALE
FRIDAYS & SATURDAYS
JULY 5-AUGUST 3
CABOT 500 AMPHITHEATRE
BOWRING PARK



TWELFTH NIGHT
SUNDAYS & MONDAYS
JULY 14 - AUGUST 12
HARBORSIDE PARK
DOWNTOWN ST. JOHN'S

ALL THE WORLD (AND PROVINCE) IS OUR STAGE!
WISHING OUR FRIENDS AT PERCHANCE
A SAFE AND WONDERFUL SEASON!



VISIT US BY THE SEA (AND PARKS AND STREETS) OF ST. JOHN'S
shakespearebytheseafestival.com | [@shakespeare_by_the_sea](https://twitter.com/shakespeare_by_the_sea) | [@shakespearenl](https://twitter.com/shakespearenl)

Tempting Providence **(Co-production with Artistic Fraud)**

July 27 - August 24

Written by Robert Chafe

Directed by Jillian Keiley*

Based on the true story of Nurse Myra Bennett and her journey from England to Newfoundland's Great Northern Peninsula in 1921.

Theatre Newfoundland Labrador (TNL) commissioned Robert Chafe to write this play in 2000 and hired Jill Keiley to direct it two years later. In the intervening 22 years TNL's hard work and dedication has seen the show travel across Canada multiple times, across the UK, Australia, and into the US with hundreds of thousands of audience members. Robert and Jillian are eternally grateful for this incredible production legacy, and Artistic Fraud thanks TNL now for their support and patronage of this summer's production. For more information on Artistic Fraud visit artisticfraud.com

Cast List (In Alphabetical Order)

Colin Furlong – Angus

Una Hill-McMullin – Myra

Stephen Oates – Man

Marquita Walsh – Woman

Creative & Production List

Stage Management –
Anna Hansen Robitschek

Production Design –
Jillian Keiley

Costume Design – Barry Buckle

Artistic Fraud Board of Directors

John Drover – Chair

Erin French

Kate Greenwood

David Hood – Treasurer

Heather Moore

David Somers

Artistic Fraud Staff

Artistic Director – Robert Chafe

Artistic Director Emeritus –
Jillian Keiley

Managing Producer –
James Richardson

Marketing & Communications
Officer – Emma Cole

Directors Notes

It is a pleasure to investigate and celebrate a subject like Myra Bennett - a resourceful and brave woman who, while she was 'from away', signifies everything we are brought up to believe a Newfoundland woman should be. Robert Chafe's re-creation of Myra suggests her famous intelligence and fearlessness were only parts of a much more complex person - one who experienced loneliness, anxiety, frustration and homesickness. Her struggles make her wit and courage all the more human and all the more triumphant. Robert, the cast and I owe a great debt to Myra Bennett, her husband Angus and all of the wonderful people who inhabit her journals and diaries. It is their stories and strength that we pay tribute to with this performance; to 'The Nurse' and all those who came to the outreaches of this wild and wonderful place, at first to help and then to find a home.

—Jill

Robert Chafe

Writer, *Tempting Providence*, Artistic Director, Artistic Fraud

When this show did well in its premiere season at the Gros Morne Theatre Festival in 2002, we decided to take a risk and bring it to St. John's. It felt like a risk because the show had been so completely crafted for the Northern Peninsula, we thought it might be too specific to find an audience anywhere else. We were wrong about that. It did well in St. John's, and then Ottawa, and then Edmonton, and Toronto, and Edinburgh and on and on. I spent a lot of time in the wake of its success trying to figure out what we'd done right, and how we could replicate it. I couldn't even truly say at the time what the play was about. Yes, a British nurse coming to the under-serviced coast of Newfoundland, but what was it at its core? A stage manager from an Irish company in Edinburgh told us that the play reminded her of the villages and towns of her grandmother's generation, held together by a sense of community that she felt was eroding. The play was about community, that made sense: as much as Myra saves the people of Daniel's Harbour she was saved by them. The show premiered the summer after 911 and saw the height of its success at the height of the war in Afghanistan. It was a particularly dark time, a time when we all might have needed a little reminding of the positive potential of community. I'm really happy to see to the play live on.

ABOUT THE DIRECTORS

MARY WALSH*

Director and Writer, *High Steel*



Mary Walsh created and starred in *This Hour Has 22 Minutes*, CBC's wildly popular take on current affairs. The series earned her many of her numerous Gemini awards and showcased her dynamic range of characters, including the flagrantly outspoken 'Marg Delahunty'.

Walsh wrote, produced and starred in the Gemini award winning series *Hatching, Matching and Dispatching*, which returned to CBC in 2017 as a feature length presentation called *A Christmas Fury*, with Walsh and the original cast reprising their roles. In 2017 she released her debut novel, a Canadian best seller, *Crying For The Moon*. She currently writes and stars in *The Missus Downstairs*, for which she has been nominated for 3 Canadian Screen Awards.

Walsh's recent TV credits include recurring roles on Syfy's *Resident Alien*, CBC's *Hudson & Rex*, and *Little Dog* for which she was nominated for a 2020 Canadian Screen Award, as well as numerous guest appearances on *This Hour Has 22 Minutes*.

Select feature film credits include *The Grand Seduction* and *Closet Monster* (Official selections at TIFF 2014 and 2015, respectively), and *Mambo Italiano*. She won the Canadian Screen Award for Best Supporting Actress in 2021 for her leading role in Helen Shaver's first feature film *Happy Place*, and is soon to appear in *Deaner '89*, the upcoming reboot of the cult classic comedy FUBAR.

Outside of the film, TV and theatre world, Mary is an outspoken advocate for mental health and addiction awareness as a spokesperson for Bell Let's Talk. She is a staunch supporter of the Wabano Centre for Aboriginal Health in Ottawa and The Gathering Place in St. John's. She also lends her time and voice to the CNIB.

Among her many awards and doctorates, Mary is the recipient of the Order of Canada, the Governor General's Lifetime Achievement Award in the Performing Arts, and the CSA's Earle Grey Award for lifetime achievement in television acting.

*The participation of this Artist is arranged by permission of Canadian Actors' Equity Association under the provisions of the Dance-Opera-Theatre Policy (DOT).

DANIELLE IRVINE

Artistic Producer, Perchance Theatre
Director, *A Midsummer Night's Dream*



Danielle Irvine is a proud Newfoundlander who has travelled a lot for her work. Highlights of her career include teaching and directing at the National Theatre School of Canada (most recently as the leader of their second year Shakespeare Project); Assistant Directing at the Stratford Festival of Canada

(including being the first director to study in their Birmingham Conservatory); and winning such awards as the Canada Council for the Arts prestigious John Hirsch Prize for Directing, the ArtsNL BMO Artist of the Year, and the ArtsNL Artist's Achievement Award 2019. Danielle was also a participant in the World Stage Festival 2000's Master Class for Directors, where she was honoured to study with such theatre greats as Peter Brook, Yoshi Oida and Polly Teale. In the fall of 2016, she was invited to participate in the inaugural Stratford Festival's International Classical Directing Intensive. For over 30 years, she has been directing theatrical productions of all sizes and types in all manner of venues. Her love and passion for NL culture combined with her theatre training inspired Danielle to co-develop a show with Anna Stassis which brought audiences through a theatrical experience on a bus, a ferry around Bell Island and culminated 650 feet underground in a mine. This was listed by the Professional Association of Canadian Theatres as a Landmark Theatrical Event in 1997. She was one of the founders of the Shakespeare by the Sea Festival in NL, as well as the founding artistic director of Sweetline Theatre Company. She has also been a keynote speaker and workshop leader at various conferences over the years and is also a casting director for television and film. Credits include: CBC's *Republic of Doyle*; the Netflix series, *Frontier*; the CBC Series, *Little Dog*; the CBC mini-series, *Caught*; the Citytv Series, *Hudson and Rex*; and the feature film, *Maudie*. Recently, she has been nominated a YWCA Woman of Distinction for Arts and Culture and a *Canadian Screen Award* nomination for Excellence in Casting for *Frontier*. Since 2014, Danielle has been bringing her love of Newfoundland culture and community together with her passion for Shakespeare and other timeless theatre in her role as the Artistic Producer of Perchance Theatre.

ABOUT THE DIRECTORS

RICHARD ROSE*

**Director, *The Complete Works of William Shakespeare*
(Abridged) [Revised] [Again]**



For 40 some years, Mr. Rose has been a distinguished director in the Canadian theatre community, as well as having directed internationally. He recently retired as Artistic Director of the Tarragon Theatre, Canada's leading new play theatre, and was the Founding Artistic Director of the highly regarded Necessary

Angel Theatre Company (1978 – 2002), plus the Director of Stratford Festival's Young Company and Associate Director of the Canadian Stage Company. He has directed in theatres across the country from major regional theatres like the Manitoba Theatre Centre to smaller theatres like GCTC, Ottawa, and he has directed internationally from commercial productions in the West End, New York and Los Angeles to training institutions like the Shepherd School of Music in Houston. Awards include 5 Toronto Dora awards for Direction, the Los Angeles Drama Critics Award for Direction and Bitef Festival's (Belgrade) Audience Choice Award. Mr. Rose received the prestigious Walter Carsen Prize and City of Toronto Mayor's Award for career achievements plus an Honourary Doctorate from Thorneloe University, Sudbury. He has directed nearly 200 productions across Canada and internationally in Los Angeles (his production of *Tamara* ran 10 years) New York's Off Broadway (*Tamara* ran 3 years) and London's West End and in the mediums of opera and film.

*The participation of this Artist is arranged by permission of Canadian Actors' Equity Association under the provisions of the Dance-Opera-Theatre Policy (DOT).

JILLIAN KEILEY*

Director, *Tempting Providence*



Jillian Keiley has directed and taught across Canada and Internationally. She was the Associate Artistic Director at the Resource Centre for the Arts in St. John's, Newfoundland, and founding Artistic Director of Artistic Fraud of Newfoundland. She assumed her role as the Artistic Director of English Theatre at the National Arts

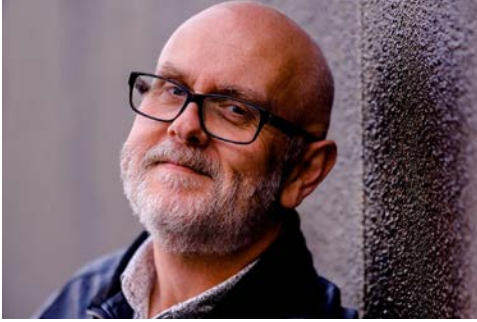
Centre in Ottawa in 2012. Highlights from Artistic Fraud include *In Your Dreams Freud*, *Under Wraps*, *Afterimage*, *The Cheat*, *The Chekhov Variations*, *Salvage: The Story of a House*, *Oil and Water*, *Between Breaths*, *The Colony of Unrequited Dreams*, and *I Forgive You*, most of which toured Canada. NAC highlights include Andy Jones' *Tartuffe*, *A Christmas Carol*, *Twelfth Night as Imagined by the Old Trout Puppet Workshop*, *Metamorphoses*, and *Copenhagen*. She also directed Anne Carson's *Bakkhai*, *The Diary of Anne Frank*, *As You Like It*, *The Neverending Story*, and *Alice Through the Looking Glass* as well as this year's *Richard II* for The Stratford Festival. Her Production of *Alice Through the Looking Glass* travelled across the country engaging local casts in Ottawa, Edmonton, Charlottetown, Stratford and Winnipeg. *Tempting Providence*, her collaboration with Robert Chafe for Theatre Newfoundland Labrador toured nationally and internationally for 12 years. Earlier this year she directed *Pals* with Richard Greenblatt and Diane Flacks for Winnipeg Jewish Theatre. Jillian finished her tenure at the NAC in August of 2022. Her productions of *TellTale Harbour* for the Charlottetown Festival and her all new production of *Come From Away* set in Gander Newfoundland were among the top selling productions in Canada in 2022 and 2023. She is directing a remount of *Tempting Providence* and a remount of *Come From Away* this year. Jillian has directed Opera, Musicals, Children's Theatre, Music Theatre, Puppet Theatre, New Work and recognized Classics, as well as concert choreographies, an Olympic medal presentation ceremony, and large scale experiential installations. She has directed productions in Italy, Australia and Ireland. She teaches and mentors regularly, including recurring contracts with the National Theatre School in Montreal. She holds Honorary Doctorates from Memorial University in Newfoundland and Toronto's York University. She is the Winner of the Canada Council John Hirsch Prize and the 2004 Siminovitch Prize for Directing.

*The participation of this Artist is arranged by permission of Canadian Actors' Equity Association under the provisions of the Dance-Opera-Theatre Policy (DOT).

ABOUT THE DIRECTORS

ROBERT CHAFE

Writer, *Tempting Providence*



Robert Chafe is a writer, educator, actor and arts administrator based in St. John's, Ktaqmkuk (Newfoundland). He has worked in theatre, dance, opera, radio, fiction and film. His stage plays have been seen in Canada, the United Kingdom, Australia and in the United States, and include

Oil and Water, Tempting Providence, Afterimage, Under Wraps, Between Breaths, Everybody Just C@Im the F#ck Down, I Forgive You (with Scott Jones), and *The Colony of Unrequited Dreams* (adapted from the novel by Wayne Johnston.) He has been shortlisted three times for the Governor General's Literary Award for Drama and he won the award for *Afterimage* in 2010. He is the author of *Two-Man Tent*, a book of short fiction that was shortlisted for the 2016 Winterset Award, and *Shiny and New*, a children's book. In 2016 his opera *Ours*, with composer John Estacio, was premiered by Opera on the Avalon. He has been guest instructor at Memorial University, Sir Wilfred Grenfell College, and The National Theatre School of Canada. In 2018 he was awarded an honorary doctorate from Memorial University. He is the playwright and Artistic Director of Artistic Fraud.



Understanding. Evidence. Direction.

Lennika Consulting Inc.
www.lennika.ca



RothLochston is a locally owned and operated multi-disciplinary contracting company that specializes in the execution of mechanical, electrical/instrumentation and civil/structural construction, maintenance and manufacturing projects.

RothLochston



rothlochston.com

ABOUT THE CAST & CREW

SELINA ASGAR – Titania/Hippolyta, *A Midsummer Night's Dream*; Sampson, Romeo, Nurse, Soldier, Shrew, Bottom, Witch, Julius Caesar, Conspirator, Richard II, Announcer, King Lear, Cheerleader, Guard, First Guard, Second Guard, Horatio, Polonius, Laertes, The Duke, *The Complete Works of William Shakespeare (Abridged) [Revised] [Again]*



Selina was born in Gander, Newfoundland. This is her third season with Perchance. By day she works as a mild-mannered developer for the IT department of a local company in St. John's. She believes everyone has a super power, that timing is everything, and the dream never dies when you believe. Selected previous credits include Judith Bliss (*Hay Fever*), Verandah (*Flying Doctor*), Agnes (*Agnes of God*), Jessica (*Jitters*), Desdemona (*Goodnight Desdemona*, *Good Morning Juliet*), Barbara/Zubaida/Catherine/Sherry (*The Laramie Project*) and Carol (*Black Comedy*).

JAYNE BATSTONE – Box Office



Jayne Batstone is a NL born and raised singer/songwriter and actor, currently between semesters from the Fine Arts (theatre program) at MUN's Grenfell campus. Her debut EP "Line Art" was released in 2021 and earned Jayne her first Music NL award nomination for Pop Artist of the Year. Reviews have described her vocals as "smooth and haunting" and her songwriting as "heartfelt and authentic". Jayne is a fierce defender of equality, a lover of all things theatre, and as her song "Pastel Angst" says, believes that "dreaming is compulsory".

MARTHE BERNARD* – Hermia, *A Midsummer Night's Dream*



Marthe Bernard is a sixth generation townie, born and raised on Gower Street ("in the shadow of the Basilica" as her great-great-Auntie Bride would say).

After studying theatre at Grenfell (for a couple of years) she played the role of Tinny on CBC's Republic of Doyle which ran for six seasons. In 2020 she starred in the award-winning feature film *Little Orphans* (dir. Ruth Lawrence). She also starred in the 2012 feature *Beat Down* (dir. Deanne Foley). Theatre credits include: Rosalind in *As You Like It* and Ophelia in *Hamlet* (Perchance, 2021) the role of Molly in Lois Brown's production of *Sex, The Rules Of* (2009 and 2013), the role of Scout in Meghan Greeley's *Kingdom* in 2012 and Helen in Greeley's "Hunger" in 2015. She lives in Los Angeles with her husband and two daughters but her home is Newfoundland.

*The participation of this artist is arranged by permission of Canadian Actor's Equity Association under the provisions of the Dance-Opera-Theatre Policy (DOT)

CHRISTA BORDEN – Mary Mag/Ella/Mame, *High Steel*; Egeus/*Starveling*/*Peaseblossom*, *A Midsummer Night's Dream*



Dearest gentle reader...Christa Borden is thrilled to be rejoining the magical force that is Perchance Theatre Co. She is most grateful to Danielle and Mary for this opportunity.

This season marks her third run of *High Steel* and her very first Shakespeare play! She is grateful to her family and to her daughter, Brooking, for all the love, patience and support they so generously give. Christa holds a vocal performance degree from MUN and an elementary education degree from UNB. She is a proud member of the Spirit of Newfoundland theatre troupe and has also been fortunate to join the Tada company this past winter. She is most grateful to you, the bums in our seats and the applause in our hearts. If music be the food of love, play on!

ROBYN BREEN – Choreographer, *A Midsummer Night's Dream*



Robyn Breen is a dance artist and movement educator. She was born and raised in St. John's, NL, and spent over a dozen years living and working in Toronto, Ontario. Since 2021, she has been spending most of her time back home in Newfoundland reconnecting with the arts community. Robyn was a co-artistic director (aka LOVER) with the Toronto Dance Community Love-In from 2014-2021 where she worked with and learned from dozens of dance artists and movement educators from around the globe. Her choreographic work has been presented at SummerWorks Performance Festival and TO Love-In's PS: We Are All Here in Toronto, The Festival of New Dance in St. John's, Coastal Currents in Halifax and Dance Stages in Corner Brook.

She is a graduate of The School of Toronto Dance Theatre, holds a BFA (Honours) in Dance from York University and has been studying the science of movement diligently since 2007. As a choreographer and movement coach, Robyn supports fellow artists and movement makers by offering guidance throughout their creative process to enhance the performing body.

EMMA COLE – Marketing and Communications Officer with Artistic Fraud



Emma Cole is a writer, costume designer, and anarchist bookseller from St. John's, NL. She holds a Bachelor of Arts from Acadia University in English and Theatre. By day she works for local arts organizations in communications and administration (AAMP, Artistic Fraud), and on other days she coordinates and designs costumes for theatre (*Shakespeare By The Sea*, *Kittiwake Dance Theatre*). Her creative writing has won awards from Kiwanis, Arts and Letters, and WritersNL, and been featured by CBC and *estuary Arts Magazine*. You can find her writing at emmacharlottecole.com, her custom clothing at [@charlatandesigns](https://www.instagram.com/charlatandesigns), and her bookselling at [@saltpagesnl](https://www.instagram.com/saltpagesnl).

ABOUT THE CAST & CREW

PRECIOUS SERAPIO DELA CRUZ – Business Development/Marketing Coordinator, Perchance Theatre



Precious is a Master of Business Administration (MBA) student at Memorial University where she has recently received the Dr. Victor Young Graduate Student Citizenship Award for her contributions to the university and the broader community. She's been involved in many Memorial programs such as the Insight Business Consulting Program, Creative Destruction Lab and Work Experience in Social Enterprise program, which allowed her to provide research, marketing and business development support for several local startups and social enterprises including Perchance Theatre. Prior to entering the MBA program, she had a total of 4 years of work experience as a Sales & Marketing Professional in the Consumer Packaged Goods (CPG) industry. She was a Key Account Manager – Sales & Marketing at Procter & Gamble (P&G) for 2 years and previously a Corporate Management Trainee – Supply Chain & Sales at Nestle for 2 years. Outside of work and school, Precious loves to hang out with friends, do outdoor activities like hiking or camping, explore new places, and try new food and activities.

SHELDON DOWNEY – Stage Manager, *The Complete Works of William Shakespeare (Abridged) [Revised] [Again]*



Sheldon returns to Perchance for another season in the great outdoors. He works in whatever discipline excites him at the time, which these days ranges from theatre to puppetry, opera to dance, or film to TV. He holds a Bachelor of Fine Arts from Memorial University in Stagecraft, and when not with the company, can usually be found at the Arts and Culture Centre working for the Mainstage, or running shows in the Barbara Barrett Theatre. Previous work for the company includes *Julius Caesar*, *Servant of Two Masters* (2019), *Hay Fever*, *The Tempest* (2022), and *The Flying Doctor* (2023). Other select credits include the Canadian premiere of Laura Kaminsky's opera, *As One*, the exploration of Franz Kafka through Double Sure Theatre's *Her Closely*, and stage managing for his alma mater with Duncan MacMillan's *People, Places, and Things*.

He is thankful for the paragons of NL theatre who've encouraged and supported him through school, pandemics, broken bones, and everything else the world could throw at him, and he hopes you enjoy the show.

HEATHER ELLIOTT – Partnership Development



Heather Armstrong Elliott's professional career includes 25+ years as a Marketing and Communications professional with experience in the public, private and not-for-profit business sectors. Heather's career started at Bell Aliant in Nova Scotia as a Product Development Manager, after several years working in senior management positions at Bell, Heather moved from Nova Scotia to Newfoundland where she took a position as Senior Communications Officer and shortly thereafter as Regional Communications Manager for the Canadian Broadcasting Corporation (CBC NL). After 14 years with CBC NL Heather shifted her focus from Communications and Public Relations to Corporate Social Responsibility (CSR) when she was hired by the Newfoundland Labrador Liquor Corporation (NLC) as a key CSR Advisor. Today Heather works primarily in the not-for-profit sector in Community Engagement, Public Relations, and Market Development. She is thrilled to be working with Perchance as the Theatre gets settled in its new home in Conception Harbour and builds for its exciting future as Conception Bay Centre's first regional theatre.

TUCKER ELLIS – Costume & Set Designer, *The Complete Works of William Shakespeare (Abridged) [Revised] [Again]*



Tucker Ellis is a costume and clothing designer based out of St. John's, NL. Tucker grew up in a small community in central Newfoundland, and has had an active interest and training in musical theatre from an early age. After wandering from home and eventually landing permanently in St. John's, Tucker attended the Textile and Apparel Design program at the College of the North Atlantic and graduated with first class honours, returning for an additional year of extended study focusing on pattern construction. Since leaving the program they have played an active role in the St. John's theatre, fashion and craft communities. Tucker is excited to return to the Perchance Theatre team for their seventh summer with some Shakespearean nonsense with the "Come-By-Perchance Players."

ABOUT THE CAST & CREW

COLIN FURLONG – Roly/George/Dr. McPherson, *High Steel*; Angus, *Tempting Providence*



Colin Furlong is an Actor from Mount Pearl, NL and is delighted to be back in beautiful Conception Harbour with Perchance this summer! No stranger to Newfoundland Theatre, Colin has spent his career performing and touring with companies across the Island and abroad. Favourite roles of his include *The Colony of Unrequited Dreams*, *AfterImage* (Artistic Fraud); *The Only Living Father*, *Outside Mullingar*, and the UK tour of *Our Frances*, (Theatre Newfoundland Labrador). Colin can often be found bringing you the TV News on CBC's *Son of a Critch*, he also appears on the SYFY Television series' *Astrid and Lilly Save the World*, and *SurrealEstate*, as well as on local favourite *Hudson & Rex* (CityTV). Thank you so much for coming to see us, and please enjoy the show!

ANDREW HALLIDAY – Demetrius/Snug the Joiner/Lion, *A Midsummer Night's Dream*; Benvolio, Juliet, Tybalt, Lavinia, Othello, Princess, Macduff, Soothsayer, Conspirator, Cleopatra, Henry VIII, Cheerleader, Bernardo, Ghost, Ophelia, Claudius, *The Complete Works of William Shakespeare (Abridged) [Revised] [Again]*



Andrew Ryan Halliday is a stage and screen performer based in St. John's, Newfoundland. Holding a fine arts degree in theatre from Memorial University's Grenfell College, he has been performing across the island from the Northern Peninsula to the Avalon for the last eight years - and he is elated to be making his debut with Perchance this season! Notable credits include *Saltwater Moon* (Rising Tide), *Romeo and Juliet* (Shakespeare by the Sea), and *17 Men* (TNL).

NICOLE HAND – Back Office Administrator; Music Arrangements



Nicole Hand is from Conception Bay South and works as a professional musician and arts administrator. She assists operations in the back office at Perchance Theatre and runs the annual Rotary Music Festival in St. John's. Most frequently she performs as a bassoonist with the Newfoundland Symphony Orchestra and with her partner, Jodee Richardson, either as a part of a duo or as saxophonist with 9-piece original band HIT PIECE (Writers of Woody Point in 2024).

ALISON HELMER – Costume and Set Designer, *A Midsummer Night's Dream*; Costume Designer, *High Steel*

Alison Helmer is a multidisciplinary artist who has been deeply and continuously influenced by her studies and experience working on the East Coast. Born and raised on the prairies, she began her theatre education with the Stagecraft program at Grenfell college before completing the Scenography program at the National Theatre School of Canada. She approaches her artistic practice through a lens of fantasy, history, and traditional storytelling. She is excited by Theatre that pushes the boundaries between convention and experimentation, and that seeks to fulfill our shared search for truth, escape, and connection.

UNA HILL-MCMULLIN – Dance Captain, *High Steel*; Mom Durham/Mama Goddammita/Alice/Dora, *High Steel*; Myra, *Tempting Providence*

Una (she/her) was born and raised in Wolfville, Nova Scotia, but now calls St. John's home. She came to Newfoundland in 2012 to earn her BFA in Theatre from the Grenfell Campus of Memorial University and upon graduating in 2016, decided to make NL her permanent home. Her select credits include: *Boeing Boeing* and *The 39 Steps* (Beyond The Overpass), *Fly Me To The Moon* and *Our Frances* (UK Tour) (Gros Morne Theatre Festival); *Mr. Burns: A Post Electric Play* (Hard Ticket Theatre), *Hay Fever*, *The Tempest*, and *High Steel* (Perchance Theatre); *Seal Slippers: A Christmas Panto and Supper Club* (Provincial Tour) (RCA Theatre). Her TV credits include: *Son of a Critch*, *Hudson & Rex*, and *The Missus Downstairs*. Una is so excited to be back for another season with Perchance for the remount of *High Steel* and can't wait for audiences to experience *Tempting Providence*. She would also like to express her deepest gratitude for High Steel's choreographer, Lynn Panting. Without her expertise, guidance, and movement vocabulary, we wouldn't have been as secure and confident in remounting *High Steel*. Lynn, you are my rock and I'm proud to be taking the reins of Dance Captain thanks to you.

TZU-HAO HSU – Puck/Attendant, *A Midsummer Night's Dream*

Tzu-Hao Hsu (Sue-How-Shoe) is a proud Taiwanese Townie based in St. John's, NL. A full-time business manager, part-time creative soul and all-the-time supporter of the arts, businesses and community, Tzu-Hao explores her heritage and identity through creative writing, storytelling, dance and music. She is a hiker, jogger, human mom and dog mom, and her favourite thing to do these days is creating songs and stories with her twin daughters in the hopes that they don't try to make another surprise cake on her kitchen floor.

ABOUT THE CAST & CREW

ANDY JONES* – Bottom, *A Midsummer Night's Dream*



Andy Jones was born in St John's where he worked at the Resource Centre For The Arts at The L.S.P.U. Hall co-writing, acting in and directing many original productions. He worked with the well-known Newfoundland Comedy troupe CODCO in its theatrical form from 1974 to 1976; and in its television format from 1986 to 1991. He has performed in theatre productions across Canada including his happy experiences at the amazing outdoor stage at the Perchance/New World company, where he played Falstaff (in both *Henry IV, Part 1* and *Merry Wives of Winsor*), Bottom in *A Midsummer Night's Dream* (2011) and Tartuffe in his own adaptation of Moliere's *Tartuffe*. He co-created the dance *Porridge Flick* with well-known Newfoundland dancer-choreographer Anne Troake in the spring of 2000. He has also written, performed and toured his six one-man shows. Andy is delighted to be reprising his role as Bottom with the wonderful cast of this year's production of *A Midsummer Night's Dream*.

OLIVE JONES – Moth, *A Midsummer Night's Dream*



Hi there, my name is Olive Jones. I am a grade 10 student in Holy Heart of Mary high school. Though I don't have much experience in the acting world, I've always been interested in acting as it has sort of run in my family with my uncle, Andy Jones, and grandfather, Michael Jones. I'd gained my first bit of acting experience this year in my drama class that I take at school with a well known theatre arts teacher, John Rao. I've learned lots about what goes on backstage during performances and am fascinated by it. Beyond acting, I'm a big fan of and play volleyball. I play for my schools team as well as my club team. I also volunteer at the YMCA as a volleyball "coach" or mentor as I like to say. One of my talents besides volleyball is actually doing accents! I've always loved having the ability to put on voices and accents of other people for fun.

AURORA JUDGE – Set Designer, *High Steel*



Aurora Judge is an artist and designer currently based out of St. Catharines, Ontario. She made her way to The Rock for the very first time to join Perchance for their 2023 summer season. Her recent work has taken her from theatre to film and back again, including several seasons at the Shaw Festival in a variety of roles. She's a Certified Arts Weirdo and has the BFA to prove it, but won't, because that would mean digging it out from under the project pile. When not dreaming up big new worlds for the stage, you can find her curled up in a blanket nest, making small cardboard worlds for her pet rats.

*The participation of this artist is arranged by permission of Canadian Actor's Equity Association under the provisions of the Dance-Opera-Theatre Policy (DOT)

LIAM KAVANAGH-PENNEY – Box Office



Liam Kavanagh-Penney is from and lives here in Conception Harbour. Liam is a grade 11 student at the local high school, Roncalli Central High. Interested in the arts Liam is excited to work with us over the summer. Over the previous season and into the fall Liam has volunteered with us many times, from helping to build the theatre to scaring the community in the Halloween Harbour Haunt. Liam is very excited to work with us again this season and hopes to add to the already positive atmosphere we have here as a team.

SEAMUS KAVANAGH-PENNEY – Box Office



Seamus Kavanagh-Penney is from Conception Harbour NL. He is a grade 11 student of Roncalli Central High School in Avondale. He loves and shows interest in all the fields of science, particularly history, archeology, and biology. He loves to learn something new everyday and to be an active member in his local community, which is why he helps out at the Perchance Theatre as much as he can.

ALISON MOIRA KELLY – Assistant Director, *A Midsummer Night's Dream*



Allison Moira Kelly (she/they) is a director, actor, and acting teacher from Gander, Newfoundland and Labrador. She holds a Bachelors of Fine Arts from Memorial University, Grenfell Campus, an MFA from York University, and studied directing at the National Theatre School of Canada. Select credits for Perchance: *Hamlet* (Hamlet), *Our Eliza* (Eliza), and *The Seagull* (Masha). She has performed with the Resource Centre for the Arts, Two Planks and a Passion, Artistic Fraud, and Rising Tide, and more. Select directing credits include *Trojan Kids*, and *Quiller* (National Theatre School), *Newfoundland Rocks: A Shed Party* (Gros Morne Theatre), and as associate director on *Come From Away*. Allison is proud to have been a regular instructor at Grenfell Campus since 2016. She played Mike Jr.'s girlfriend Linda in season 3 of CBC's *Son of a Critch*. Upcoming, Allison is directing *Our Eliza* (GMTF).

ABOUT THE CAST & CREW

BRITTANY KING – Administrative Assistant/Front of House Manager, Perchance Theatre



Brittany King (she/her) is the mother of one cat named Sophie (cutest cat in the world). In her free time she enjoys watching the same three tv shows over and over and over again. She was a part of the local community theatre scene in St. John's both on and off stage for a decade. She worked in background casting for the first four seasons of *Hudson & Rex*.

This is her third year with Perchance Theatre and she is constantly pinching herself that she has the privilege to work with so many brilliant and kind people! Enjoy the show!

LEO MACKEY – Stage Manager, *A Midsummer Night's Dream*



Since graduating from Memorial University in 1993, Leo has been teaching junior and senior high school in Newfoundland. Leo is looking forward to working with Perchance Theatre this summer as stage manager for *A Midsummer Night's Dream* and assistant stage manager for *The Complete Works of William Shakespeare (Abridged) [Revised] [Again]*.

FRANNY MCKEOWN – Cobweb, *A Midsummer Night's Dream*



Frances Avalon McKeown (Cobweb) was born and lives in Los Angeles, California. She plays piano and her second recital was in June 2024. This past spring she was a butterfly in *Room Eight Spectacular Showcase of Grade 2* at Elysian Heights School. She has a little sister named Dot who is one and a half. She LOVES Taylor Swift, cats, and swimming. She is so excited to be a fairy in *A Midsummer Night's Dream*.

WOODY MEANEY – Lead Contractor on Site



I'm 51, married to Johannah for 29 years. I have two kids, Nathan, and Noah, and I've lived in Avondale most of my life. I've been a contractor on and off for most of my life.

ANITA NITOLY – Fight Director, *A Midsummer Night's Dream*

Selected Fight Director and Sexual Choreographer credits: Stratford Festival 2024; *Bad Roads* (Crows); *Angels in America* (Buddies); *The Retreat* (Imago); *The Retreat* (YPT); *JCS* (Here For Now); *Wildwoman* (Soulpepper), *Hamlet* (The Rose); *Sexual Misconduct of the Middle Classes* (TIP), *Fall on Your Knees* (CanStage/NAC); *Counter Offence* (Segal Centre); *Fairview* (Canstage); *Prodigal* (Crow's Theatre); *Trojan Girls and The Outhouse of Atreus* (Outside The March/Factory Theatre); *Our Place* (Cahoots/TPM); *The Last Wife*, *The 39 Steps*, *Successions* (Centaur Theatre); *Whole World* (Carousel Players). Selected Stunt Performer/Stunt Actor credits: *Law & Order Toronto*, *SEE*, *Star Trek: Discovery*, *Pretty Hard Cases*, *Titans*, *The Boys*, *Rabbit Hole*, *What We Do in the Shadows*, various Ubisoft motion capture productions.

ELISABETH NYVEEN – Production Manager/Technical Director, Perchance Theatre

Elisabeth Nyveen (pronounced kinda like full-into-it fie-gleam) is pleased to be making a glamorously foggy Newfoundland debut! Hailing from Montreal, this CFA enjoys blending the lines between game, audio, and theatre; spending hours working on really tiny objects; creating colourful paperwork; looking at crustaceans, fish, and reptiles; refining bulk iced tea recipes; and not being bitten by black flies. Some of those are possible...

Since receiving a BFA in Scenography, Liz has accumulated experience as a multidisciplinary designer, technician, and manager of many theatrical things. Past credits and projects include *Little Shop of Horrors* by CSLDS (puppeteer/Audrey II), *Hedwig and the Angry Inch* at Pride MTL (stage manager), *Reefer Madness* by Contact Theatre (sound designer), and the *Montreal Just for Laughs Festival* (production manager, RIP).

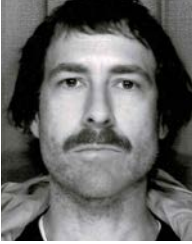
This person also, regrettably, has a podcast.

ANDREW O'BRIEN – Tom Snout, The Tinker, Mustardseed, *A Midsummer Night's Dream*; Father Corrigan/Red Trahey/Pat/Mike/Jim/Bartender, *High Steel*

Andrew O'Brien has spent the last decade as 1/2 of the Juno nominated contemporary folk duo Fortunate Ones. He cites the incomparable Ron Hynes as one of his biggest songwriting influences and is absolutely delighted to dust off his acting chops alongside such a worldclass cast and crew.

ABOUT THE CAST & CREW

**STEPHEN OATES – Oberon/Theseus, *A Midsummer Night's Dream*;
Con/Tom/Master Derrick, *High Steel*;
Man, *Tempting Providence***



Stephen O. Oates is a mono-undisciplined artist from Carbonear currently residing in Riverhead. Having served three years of a five-year sentence in artist's gulag for rhymes against the state, he looks forward to once again bringing his unique voice and short legs to the stage as a condition of his release. Please enjoy the show, and remember: the ticket price is the minimum you must pay, you can always opt to pay more if you prefer.

LYNN PANTING – Choreographer, *High Steel*



Lynn Panting is a Newfoundland-based artist, arts educator and arts advocate known for creating innovative and accessible dance works. She is deeply committed to the growth of creativity and self-confidence through movement and holds a Master of Arts in Philosophy from Memorial University as well as a Master of Humanities concentrating in performance, dance and the body. In 2022, Lynn published her first book "We Dance High Low Fast & Slow" an introduction to creative movement for children. Lynn is the owner and artistic director of Lynn Panting Dance, the Artistic Director and Producer of Untellable Movement Theatre, and a founding member of Ladies Who Lunch Productions. lynnpantingdance.com

BLAKE PYNE* – Lysander/Flute/Thisbe, *A Midsummer Night's Dream*; Prince, Friar Laurence, Titus Andronicus, Macbeth, Marc Anthony, King John, Cheerleader, Hamlet, Player King, Player Queen, *The Complete Works of William Shakespeare (Abridged) [Revised] [Again]*



Blake Pyne is a multidisciplinary artist with a focus on acting, singing, and musical theatre performance from Swehl-tcha (Cultus Lake, B.C.). He holds a certificate in musical theatre from the Randolph College for the Performing Arts and is a recent graduate of the National Theatre School of Canada's acting program. This is Blake's third season with Perchance Theatre, and he couldn't be happier to be back making theatre with such an excellent company. Selected theatre credits include "Argonaut" in *Madea* (Canadian Opera Company), "Paris" in *Romeo & Juliet* (Sunbeam Theatre), "Caliban" in *The Tempest*, "Sandy Tyrell" in *Hay Fever* and "Valere" in Moliere's *The Flying Doctor* (Perchance Theatre 2022-2023), "Pierre" in *There Is Nothing You Can Do* (NTS) "The Baron Docteur" in *Venus* (NTS), and "Hart" in *Unity 1918* (C.S.O.P.A) where he won the award for Best Youth Actor in the Fraser Valley Zone Festival.

GLENN REDMOND – Stunt Coordinator, *High Steel*

Glenn Redmond was born in Torbay Newfoundland and has been involved in the film industry as a stunt performer and stunt coordinator for the past 25 years. This is Glenn's second year with Perchance Theatre as a stunt/flight choreographer. Select credits include: *Republic of Doyle*, *Hudson and Rex*, *Surrealstate*, *Frontier* and *Son of a Critch*.

JAMES RICHARDSON – Managing Producer with Artistic Fraud

James is an award-winning producer, cultural manager, director, sound designer, actor and collaborator with over 20 years experience in theatre and music across Canada. Originally from St. John's, James founded Third Wall Theatre in 2001 in Ottawa, where it quickly became one of the city's leading theatre companies. As producer/artistic director, he has won several Prix Rideau Awards and Capital Critics Circle awards and in 2016 he was awarded the Special Jury Prize from the Capital Critics for his work with TWA, Third Wall's youth wing that he established. He has served as General Manager for Odyssey Theatre and the St. Lawrence Shakespeare Festival in Ontario and worked with the Ottawa Jazz Festival and Ottawa Children's Festival. As an actor, James has worked with Third Wall Theatre, Vision Theatre, Actors' Co-op, Gros Morne Theatre Festival and Theatre By The Bay; he holds a BFA in Fine Arts (Theatre) from Grenfell College and a MFA in Directing from the University of Ottawa. Over the years he has worked all jobs from baggage handler to nanny to overnight stocker. When not in the theatre he can be seen building things, playing piano, participating in orienteering events or on a hike with Laurel Anne and their dog Zeke.

**JODEE RICHARDSON* – Season Sound Design and Composition
Musician/Ray/Calvin, *High Steel***

Jodee Richardson is a lifelong Newfoundland creator who focuses on local people, places and projects, hopefully using his abilities to further enrich the cherished culture of our province. He is currently developing a new original 9-member dance band, HIT PIECE (debuting at Writers of Woody Point 2024) and tours the island each September with his partner Nicole Hand and their dog Nan. Next year his new play *Sorrow's Tree* will debut with the beloved Perchance Theatre.

*The participation of this artist is arranged by permission of Canadian Actor's Equity Association under the provisions of the Dance-Opera-Theatre Policy (DOT)

ABOUT THE CAST & CREW

ANNA HANSEN-ROBITSCHKEK – Stage Manager, *High Steel*, *Tempting Providence*



Anna Hansen-Robitschkek is a graduate of MUN's Fine Arts program in Theatre at Grenfell. She is a stage manager by trade, but is proud to work with Perchance in any capacity. Highlights of her career so far include: Costume Designer for Picnic at *Hanging Rock*, directed by Alex Fallis, Theatre @ Grenfell; Head of Props for *Confessional* and *Les Belles Seours*, directed by Lorne Parly, Theatre @ Grenfell; direction of *Without a Doubt* (unpublished), Rotary Arts Centre, and stage management for *Stolen Sisters* by Leahdawn Helena, produced by PerSiStence Theatre. Our whole team is so proud to share our jam packed season with you, and hope you learn, and cry, and laugh from these stories.

MARTIN ROTCHFORD – Box Office



Martin Rotchford (he/him) is a local lad. He was born and raised in Conception Harbour, NL. He just finished Grade 11 at Roncalli Central High School in Avondale. He intends to pursue a career in Engineering at Memorial University. He is an avid crib player, loves swimming, and going on adventures with his family. He is an active member in the community, always contributing to local events. Martin lucked in to a three-day stint with Perchance Theatre last season. That was all it took to get him hooked, so he's making a comeback this year. You'll see him milling around, so be sure to say hello! He's a pretty nice guy.

SASKIA SCHULZ-NORVELL – Assistant Stage Manager, *High Steel*, *A Midsummer Night's Dream*



This is Saskia's first year working with Perchance theatre. She was the ASM for both runs of Wonderbolt's The Best Medicine Show, has a degree in English and Communications from Memorial University, and occasionally eats fire for money. After nearly ten years of working in the circus community both in Newfoundland and California, she is happy to have found a summer home in Perchance's backstage.

**ERIKA SQUIRES – Helena, *A Midsummer Night's Dream*;
Bridge/Christine/Josephine/Tish, *High Steel***

Erika Squires is a Newfoundlander and theatre artist in her final year of training at the National Theatre School. An emerging playwright, Erika has written the plays *Hush* (for PerSistence Theatre) and *Baby* (self-produced with support from ArtsNL and the CCA). For Perchance you may have seen Erika as Ariel in *The Tempest*, Bridge/Christine/Josephine/Tish in *High Steel*, Horatio in *Hamlet*, Lebeau/Hymen in *As You Like It*, or as the Soothsayer in *Julius Caesar*. Other acting credits include Cliff in *Sun in an Empty Room* (GroupHug Productions), Brooke Lohst in *Be More Chill* (Best Kind Productions), Disciple in *Godspell* (Etcetera Productions), and Constance in *Goodnight Desdemona (Good Morning Juliet)* (MUNL Drama). Erika is so happy to be back in her favourite place for another season at Perchance Theatre!

MARQUITA WALSH – Petra Quince / Philostrate, *A Midsummer Night's Dream*; Woman, *Tempting Providence*

Marquita Walsh is a multidisciplinary artist from Fleur de Lys, Newfoundland. Her outport upbringing has always been her biggest inspiration for storytelling. In 2013, Marquita graduated from Memorial University's Grenfell Theatre Program with a Bachelor of Fine Arts (Acting). For the past ten years she has worked extensively across the island and country as an actor and singer. Walsh is also a songwriter. Her debut album *Into The Night* was nominated for Music NL's Pop album of the year in 2018. Select Credits include: **For Theatre:** *Tell Tale Harbour/Anne of Green Gables*- Confederation Centre of the Arts, *No Change in the Weather*-Terra Bruce Productions, *Tempting Providence/ Bye Bye Birdie*- Theatre Newfoundland Labrador. Revue 2018- Rising Tide Theatre. Brazil Square- Resource Centre for the Arts, *The Marvelous Wonderettes/ Crimes of the Heart/ Boeing Boeing-Beyond The Overpass*. **For Film:** *Hudson and Rex Season 6/ CityTV, Little Dog/CBC, Astrid and Lilly/CTV Sci-fi, SurrealEstate/ CTV-Sci-fi, Iskander/French Kiss Productions*.



Angler is an innovation-driven consulting firm with international experience providing strategic advisory and project delivery services across our evolving energy and ocean technology sectors.



www.anglersolutions.ca

Flynn's



Your Grocery Store Next Door

117 Conception Bay Hwy Avondale, NL
709-229-3881 . flynns.store@persona.ca

MONTHLY SUPPORTERS

Today's "two hours of traffic on our stage" is the result of an enormous amount of work by an army of essential artists. Before the show hits opening day:

- 3,600 actor hours of rehearsal
- 1,050 stage management hours of rehearsal
- 6 months of design time by costume, music, and set designers
- 8 months of planning and designing marketing
- 12 months contemplation, planning, script analysis, and rehearsal time by directors
- Year-round care of our unique venue through all weather
- 18 months of administration time
- 1,080 volunteer hours a year by our board of directors

As you can see, this is not a small seasonal event. Perchance is a cultural INDUSTRY attracting international interest, generating economic benefit, employment and creating partnerships for a strong tourism destination. But we rely on our supporters to help make this all possible.

Many of Perchance Theatre's supporters are turning to a monthly donation through Canada Helps. A modest and "painless" monthly donation of \$25 can become \$300 by year end.

This combined support of many monthly donors allows YOU to make a bigger charitable impact, and allows US to better forecast our finances to plan for the future. Most of all, it gives us the stability to dream bigger every year.

To become a monthly supporter, visit <http://www.canadahelps.org/en/charities/perchance-theatre-at-cupids> and select "Donate Monthly", talk to our onsite staff, or contact perchanceprotector@gmail.com



"For a few cents each month, year after year we use the services of CanadaHelps to transfer financial support to Perchance Theatre. In this way the people of this remarkable theatre company can focus more on producing breathtaking theatre and less on fundraising."

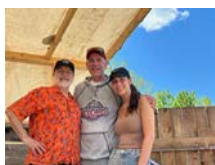
– Peggy & John Fisher, Owners of The Fisher's Loft

**Thanks, and ever thanks to our
generous patrons, supporters and believers.**

SPECIAL THANKS

Melissa Bassett	Ernie Pynn	Chris Wade
Business & the Arts NL	Kim Saunders	Francis Simms
Deborah Clarke	Tara White	Gill Dawe
Craig Williams	Sister Patricia March and	Ray Abbott
Lori Veitch	Sister Diane Smythe	Tina Abbott
DM Lawrence Penney	Sister Elizabeth Rae Lee	Grace Abbott
Mayor Judy Rotchford	Sister Geraldine	Angie Pickles
Cupids Legacy Centre	Sister Roisin Gannon	Connor Fitzpatrick
Rosalind Dawe	David Sullivan	Luke Spry
Roy Dawe	St. John's Arts and Culture Centre Costume Bank	Roselle Doyle
Elizabeth Duff	Gale Force Wins - Allan Dale and Gerry Carew	Conception Harbour Fire Department
John and Peggy Fisher	Gerry Osmond	Holyrood Fire Department
Claudine Garland	Colleen Soulliere	Theatre Newfoundland and Labrador
Jane Hall	Conception Harbour Town Council	Anglican Cathedral
Amanda Blackwood	Lindsay Phillips Oates	Greg Walsh
Tim Carew	Frankie O'Neill	Kari Brown
Sarah Stone	Brian Dalton	Mariette Sceviour
Vivian Tulk	John Angelopoulos	O'Briens Music
Amy Henderson	Mark White	Michelle Thorup
Ella Heneghan	John Drover	Christine Hand
David and Karen Hood	Dave Rowe*	Christine Hand
Crystal Laffoley	Jamie Skidmore	Margo Connors
David Latham	Cathy Walsh	Robert Stack
Denyse Lynde	Craig Walsh	Dale Jarvis & Kelly Jones
Marian Hall	Iron Workers Local 764	Bryar Smith
Melanie Martin	Nicky Cole	Sharon Buehler
Paula Morgan	Kenneth Costello	Richard Rose
Rob Ormsby		OC Manor
Janine Pearson		Cynthia Silver
Marget Davis		Brian Silver
Roger Pearson		

Brett Legere	Alyssa Campeau	Noah Meaney
Darryl Lane	TJ Arch	Brendan Agnew
Paulette Lane	Kelly Reddigan	Dory Albrecht
Pat Foran	Caroline Pike	Kyle Ahluwalia
Bob Rossiter	Chris Pike	Jim Chalmers-Gow
Bob Buckingham	Anita Pike	Denise Dolliver
Jodee Richardson	Emma Fitzpatrick	Nicholas Leno
Nicole Hand	Heidi Burns	Owen Van Houten



We are so grateful to the brilliant team of volunteers who have given us their time, energy, support and more to help us throughout the years. From performing, mowing the lawn, running electrical wires, painting sets or the parking lot, keeping us fed and even tearing down and rebuilding a theatre! We could not have gotten here without their support.

Thank you!

Perchance Theatre

WE DO IT RIGHT THE FIRST TIME. EVERY TIME



(709) 727-5162

2024/2025 ORCHESTRA
SEASON SUBSCRIPTIONS
ON SALE NOW

NS



RESONANCE

30 YEARS OF MAESTRO MARC DAVID

